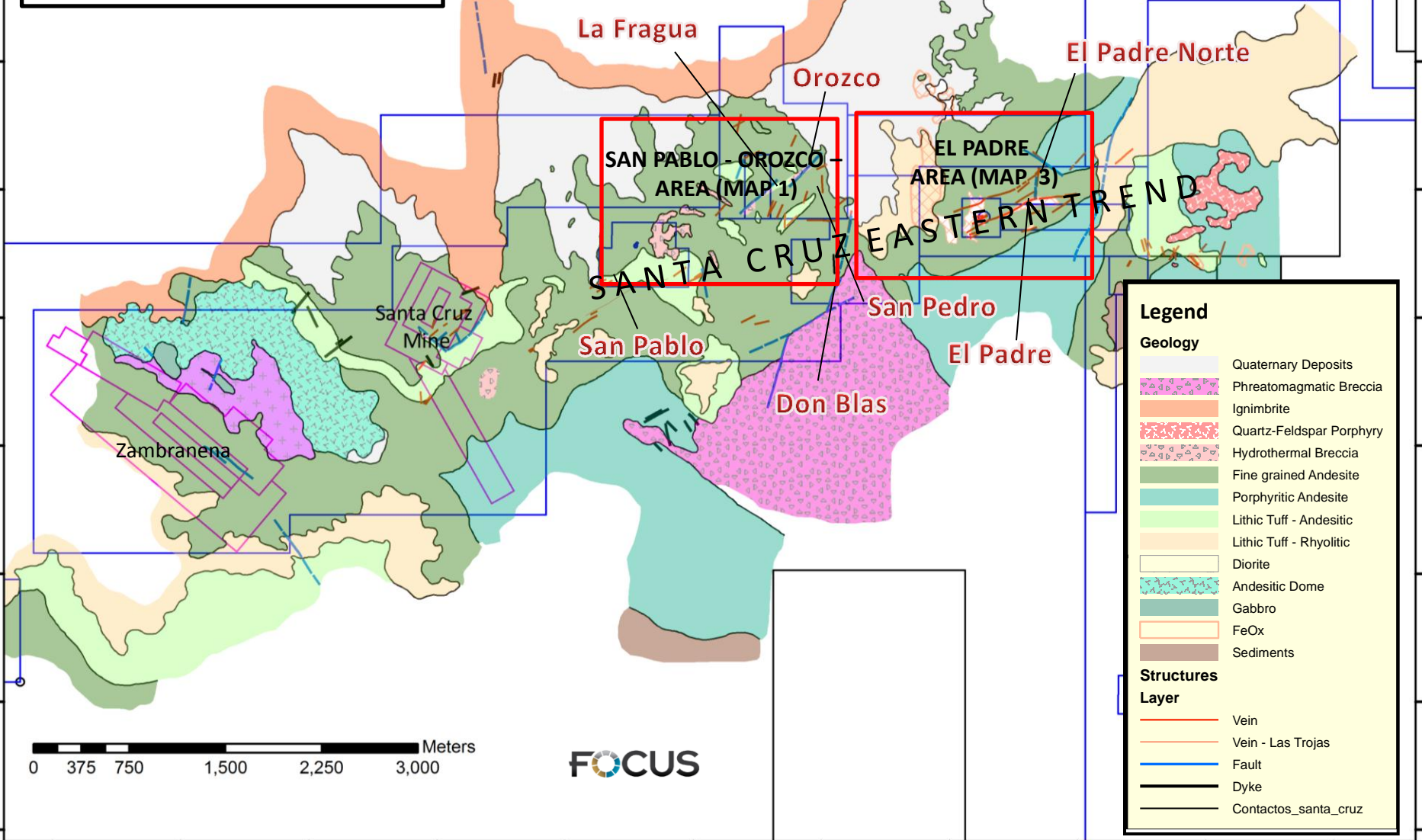


Santa Cruz Project  
Durango, Mexico

Geology & Index Maps



**Legend**

**Geology**

- Quaternary Deposits
- Phreatomagmatic Breccia
- Ignimbrite
- Quartz-Feldspar Porphyry
- Hydrothermal Breccia
- Fine grained Andesite
- Porphyritic Andesite
- Lithic Tuff - Andesitic
- Lithic Tuff - Rhyolitic
- Diorite
- Andesitic Dome
- Gabbro
- FeOx
- Sediments

**Structures**

**Layer**

- Vein
- Vein - Las Trojas
- Fault
- Dyke
- Contactos\_santa\_cruz