



IP Survey Area (next page)

Huallay Norte

Huayllay

Macayaca

Lourdes

Yanapata

Shalca Mine
in production
(Volcan)

Zona Oxidos

Santa Rosa

Milagros-Sally

Santa Rosa Sur



Legend

Lithology

- Lithic Tuff
- Andesitic Lavas
- Sandstone
- Quartzite
- Limestone

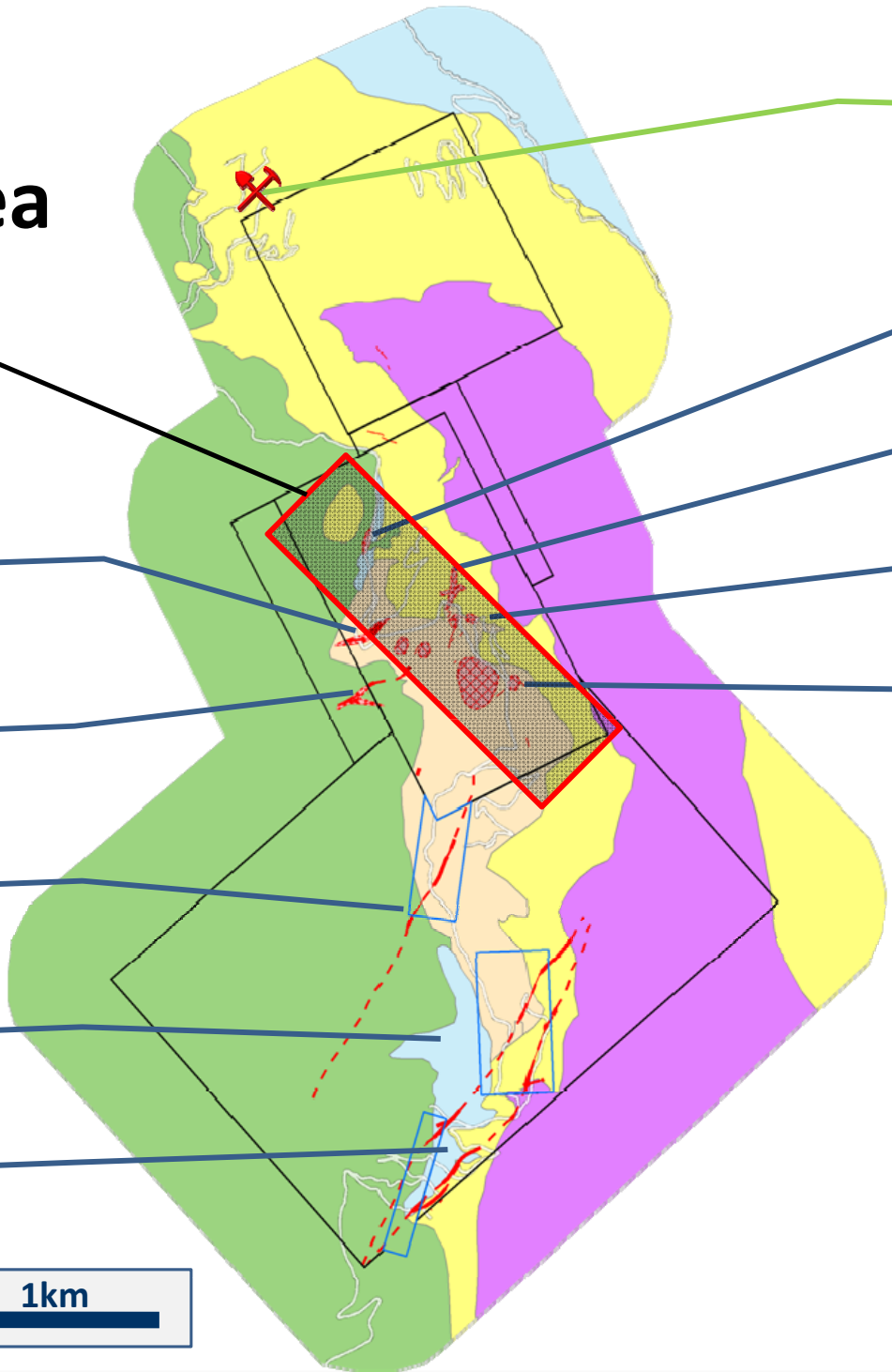
Mineralized Vein

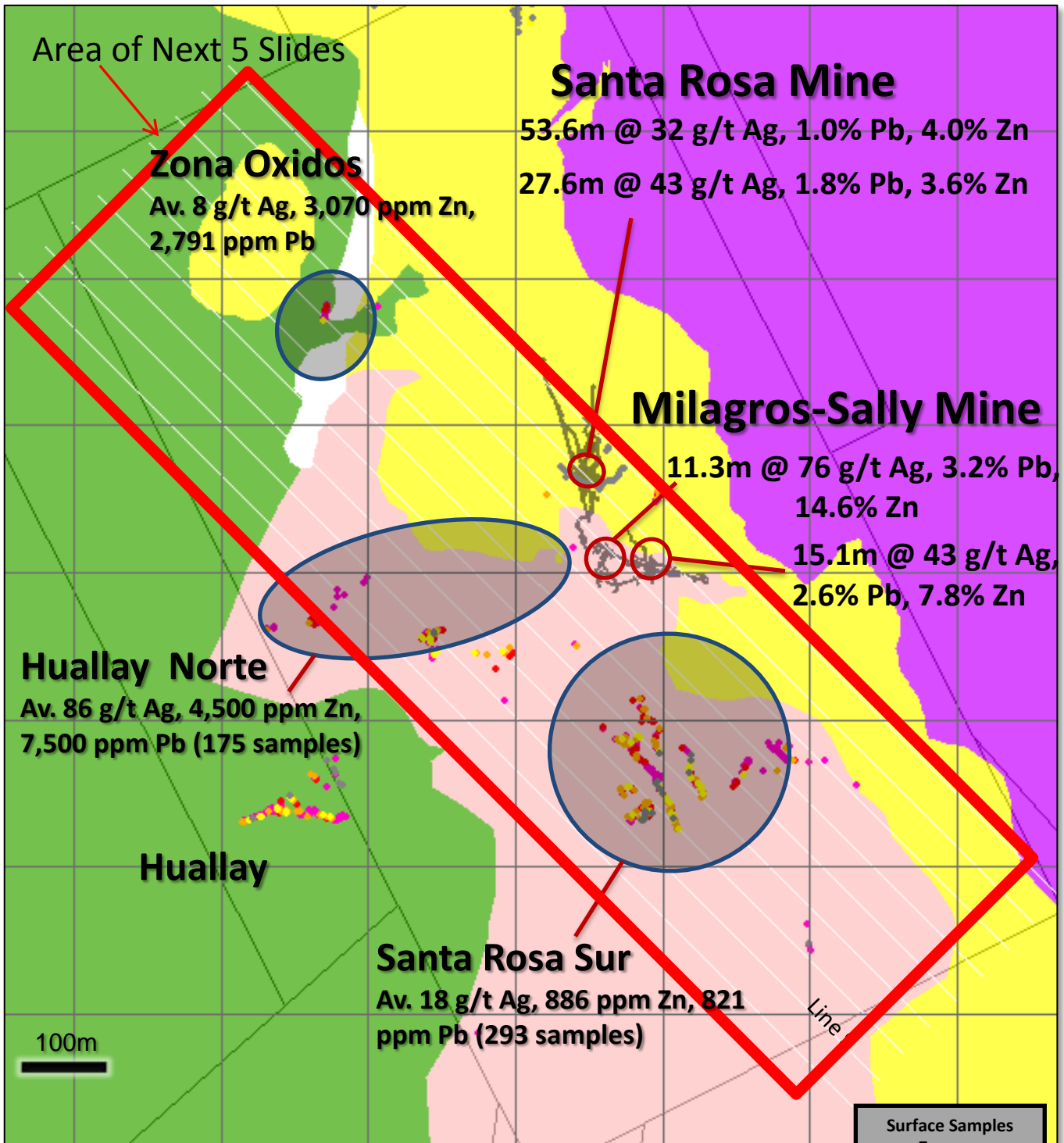
Silicified Area

Focus Claims

Third Party Claims

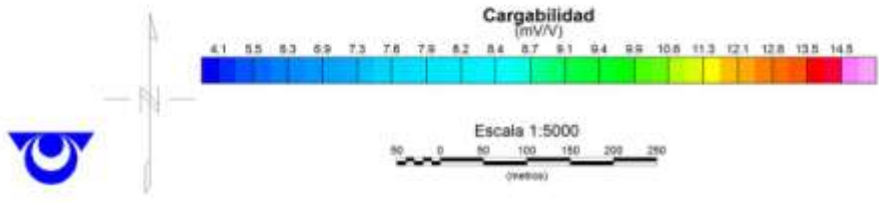
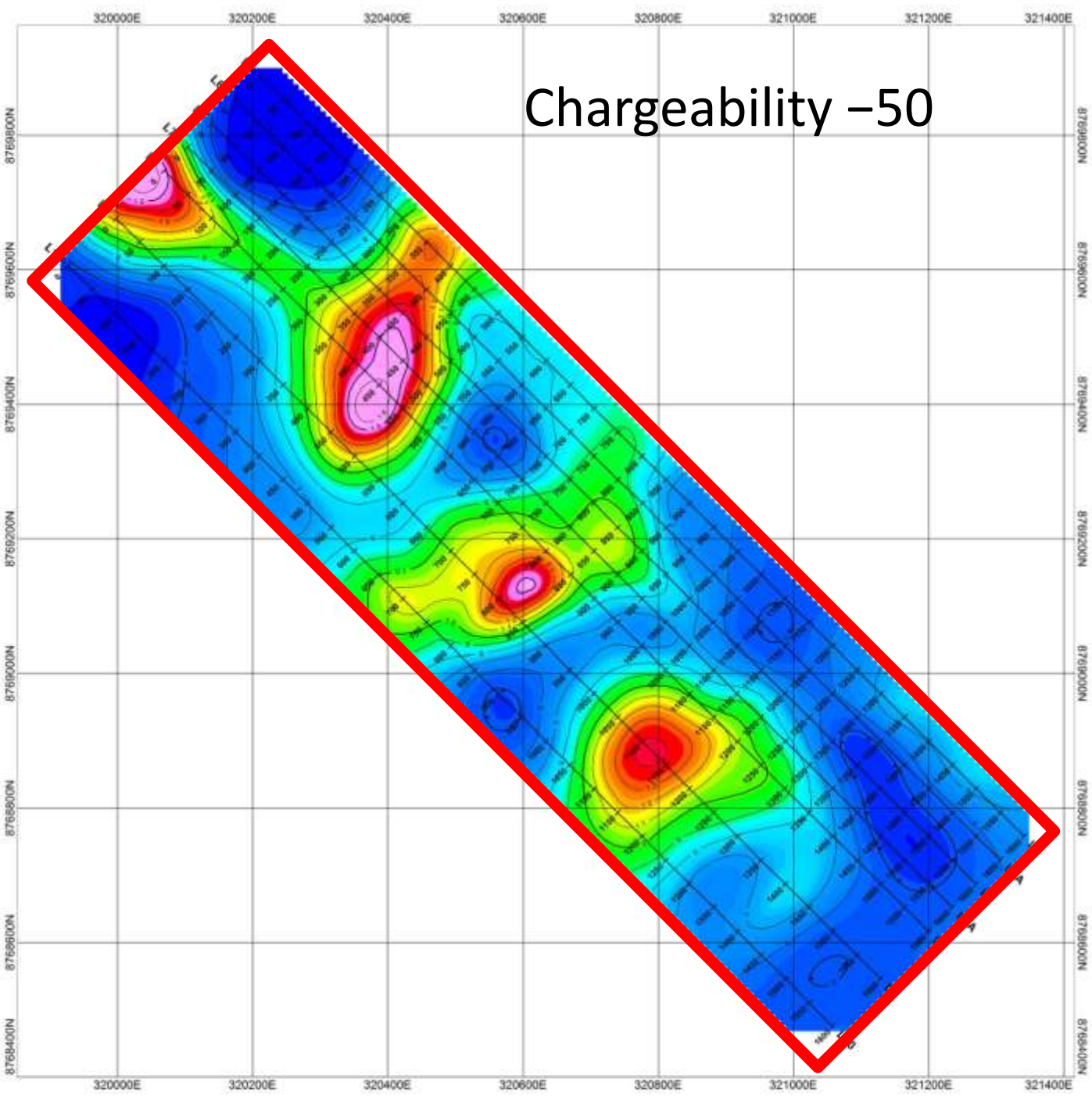
Access Road





IP Survey Area, Targets with Rock Chip Geochemistry (Zn)

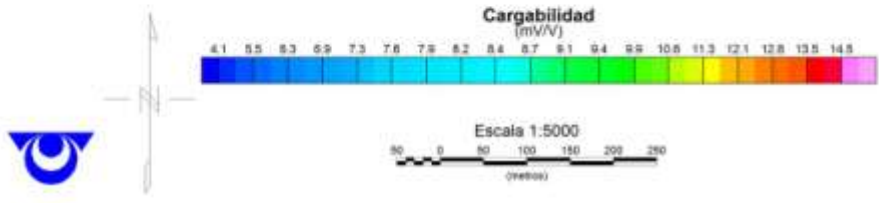
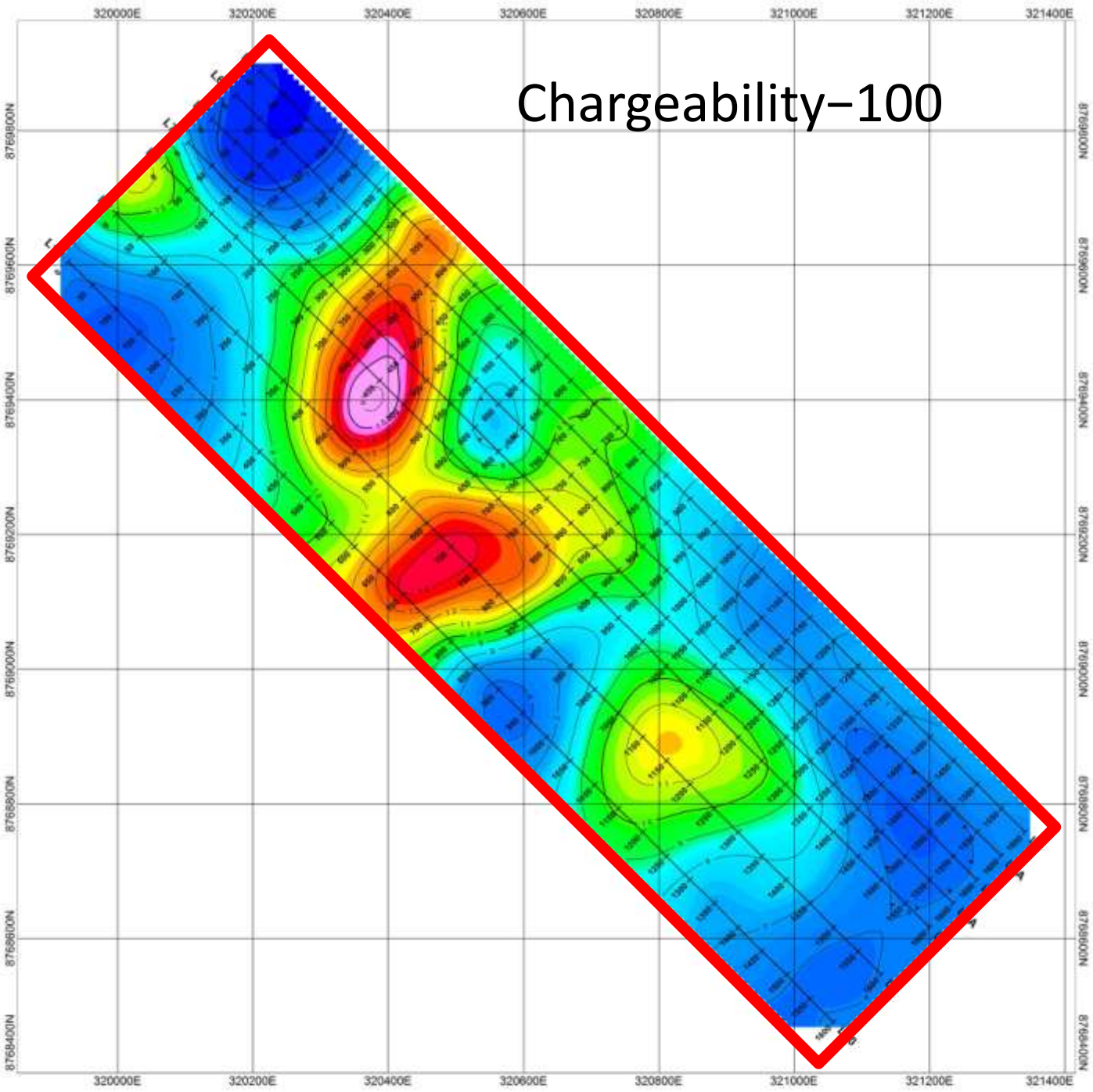
Chargeability -50



MINERA FOCUS S.A.C.
SANTA ROSA, Huaral, Lima Levantamiento de Polarización Inducida Modelamiento Tridimensional
Plano IP-10: Modelo de Cargabilidad a 50m de Profundidad Unidades en mV/V Configuración de Electrodo: Polo-Polo, a=50m a 350m Abril 2011
Arce Geofisicos - Estudio #943-11



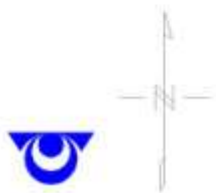
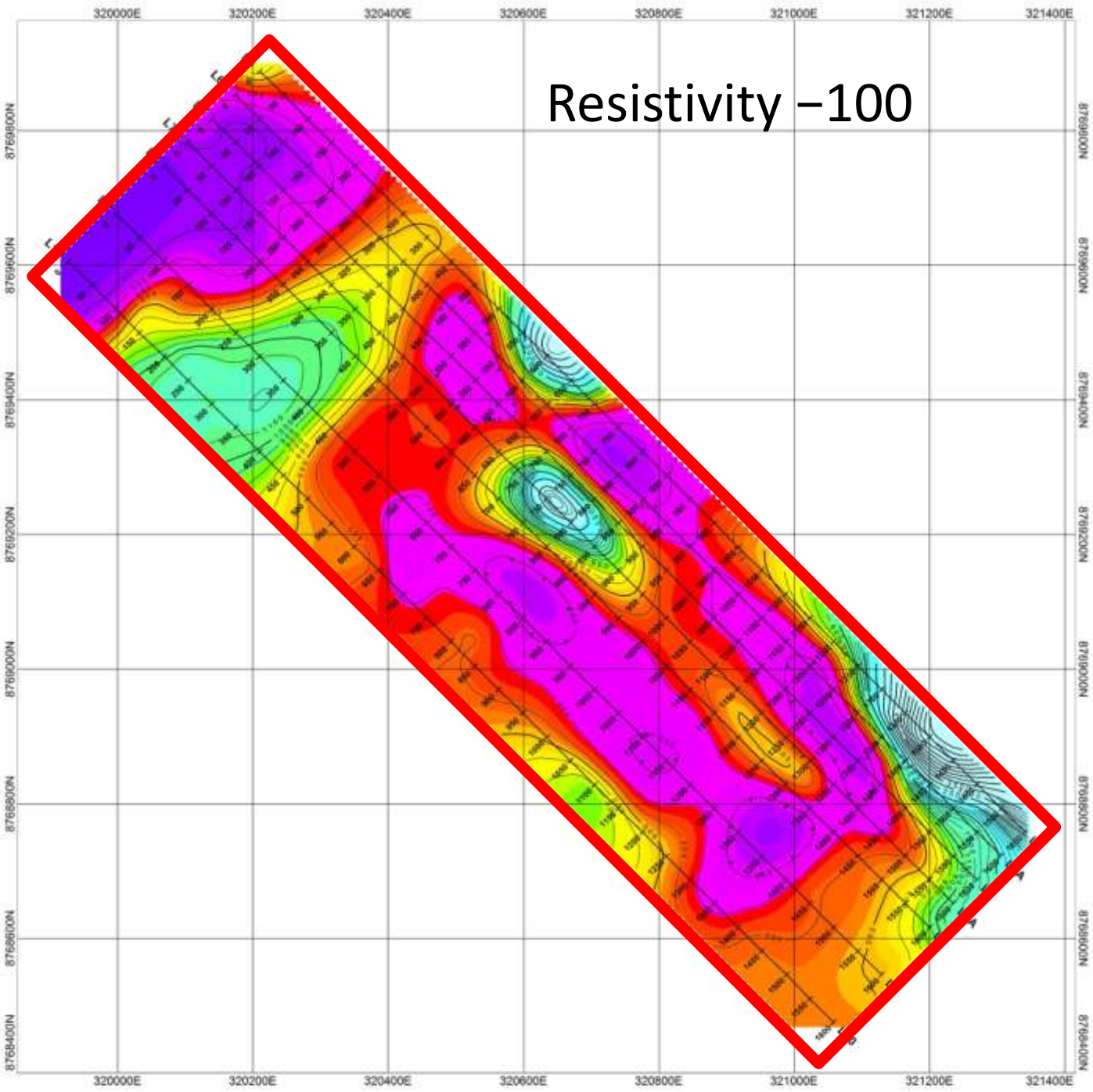
Chargeability-100



MINERA FOCUS S.A.C.
SANTA ROSA, Huaral, Lima Levantamiento de Polarización Inducida Modelamiento Tridimensional
Plano IP-11: Modelo de Cargabilidad a 100m de Profundidad Unidades en mV/V Configuración de Electrodo: Polo-Polo, a=50m a 350m Abril 2011
Arce Geofisicos - Estudio #943-11

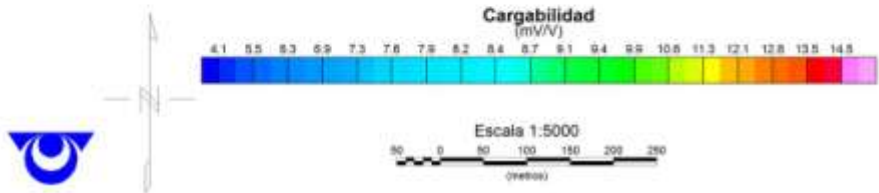
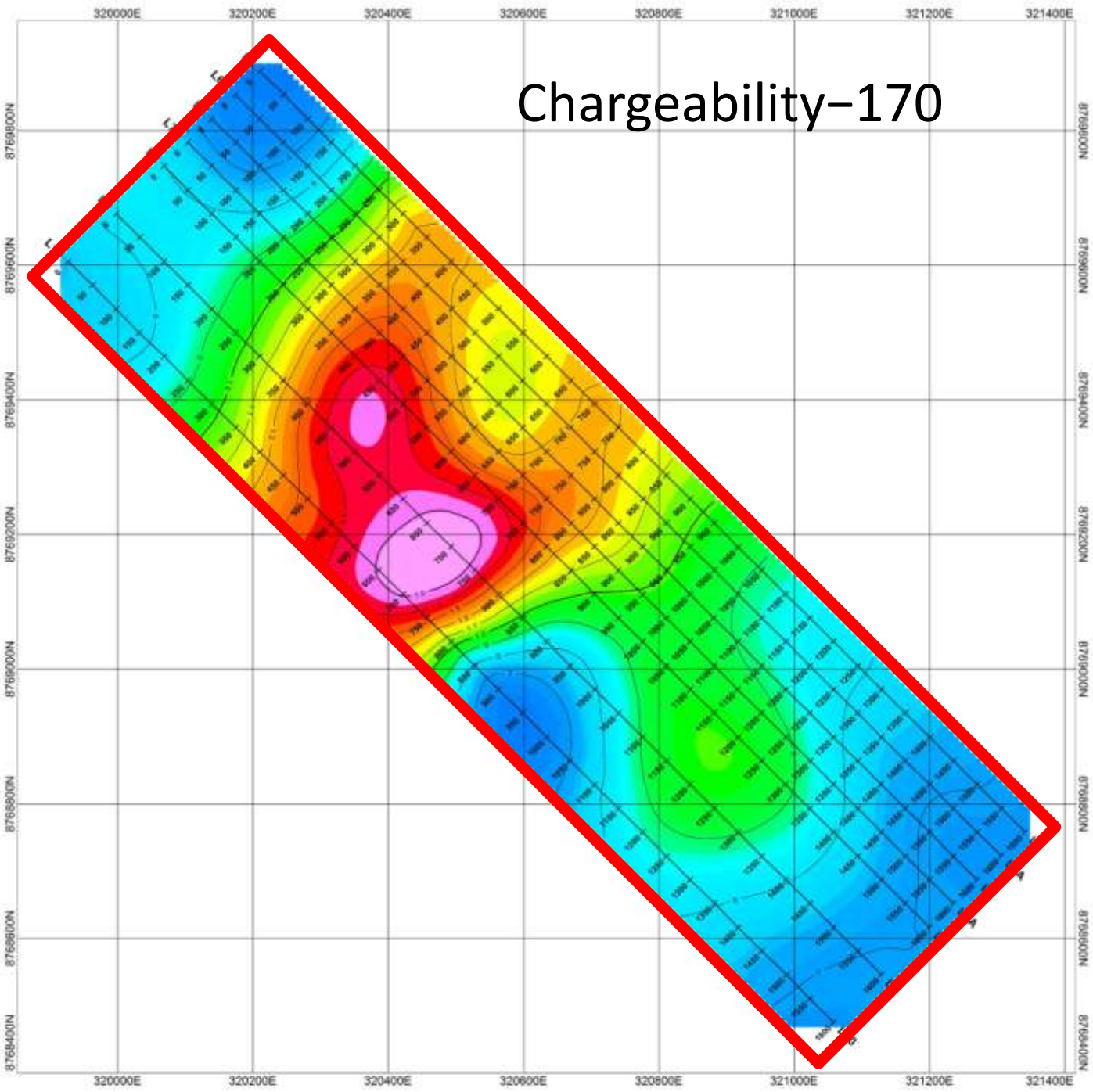


Resistivity -100



MINERA FOCUS S.A.C.
SANTA ROSA, Huaral, Lima Levantamiento de Polarización Inducida Modelamiento Tridimensional
Plano IP-3: Modelo de Resistividad a 100m de Profundidad Unidades en ohmiometros Configuración de Electrodo: Polo-Polo, a=50m a 350m Abril 2011
Arce Geofisicos - Estudio #943-11

Chargeability-170



MINERA FOCUS S.A.C.
SANTA ROSA, Huaral, Lima Levantamiento de Polarización Inducida Modelamiento Tridimensional
Plano IP-13: Modelo de Cargabilidad a 170m de Profundidad Unidades en mV/V Configuración de Electrodo: Polo-Polo, a=50m a 350m Abril 2011
Arce Geofísicos - Estudio #943-11

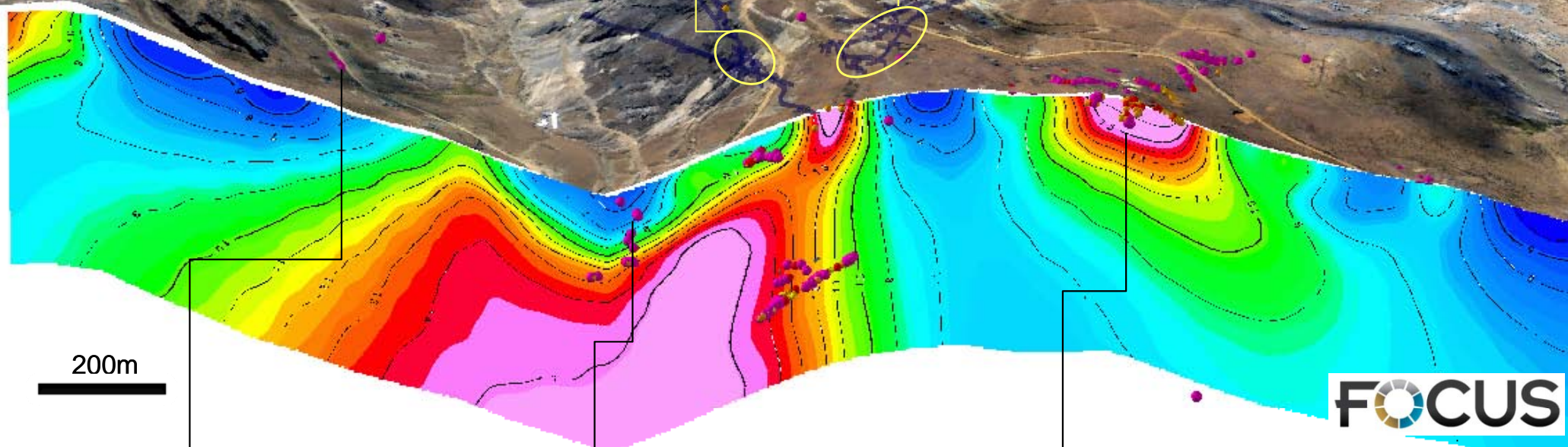
Line 9 Chargeability Profile Looking NE

Santa Rosa Mine

53.6m @ 32 g/t Ag, 1.0% Pb, 4.0% Zn
 27.6m @ 43 g/t Ag, 1.8% Pb, 3.6% Zn
 5.9m @ 389 g/t Ag, 24.3% Pb, 15.4% Zn

Milagros-Sally Mine

15.1m @ 43 g/t Ag, 2.6% Pb, 7.8% Zn
 11.3m @ 76 g/t Ag, 3.2% Pb, 14.6% Zn
 14m @ 40 g/t Ag, 0.8% Pb, 8.3% Zn



Zona Oxidos

Av. 8 g/t Ag, 3,070 ppm Zn,
 2,791 ppm Pb

Huallay

Av. 86 g/t Ag, 4,500 ppm Zn,
 7,500 ppm Pb (175 samples)

Santa Rosa Sur

Av. 18 g/t Ag, 886 ppm Zn, 821
 ppm Pb (293 samples)

