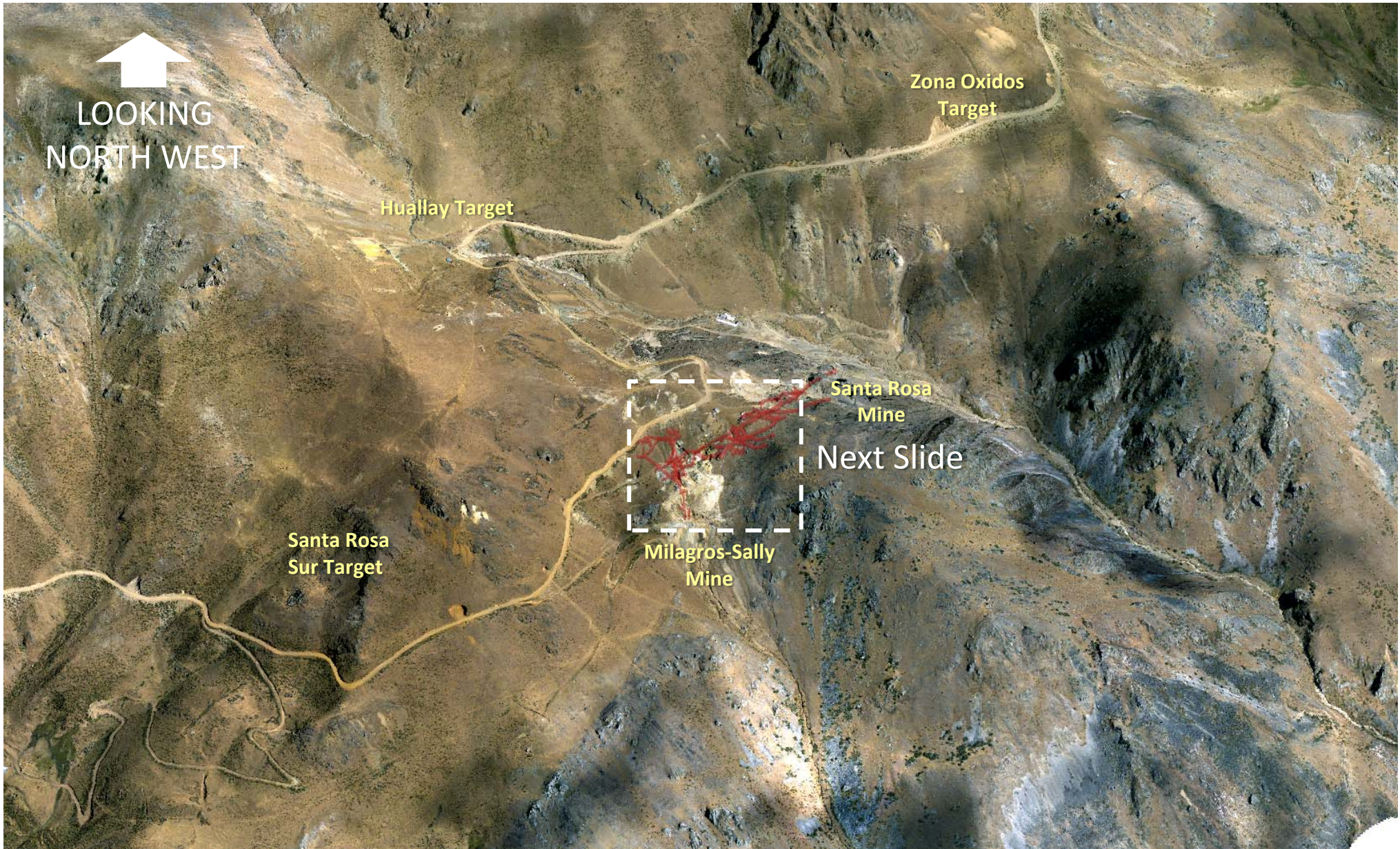


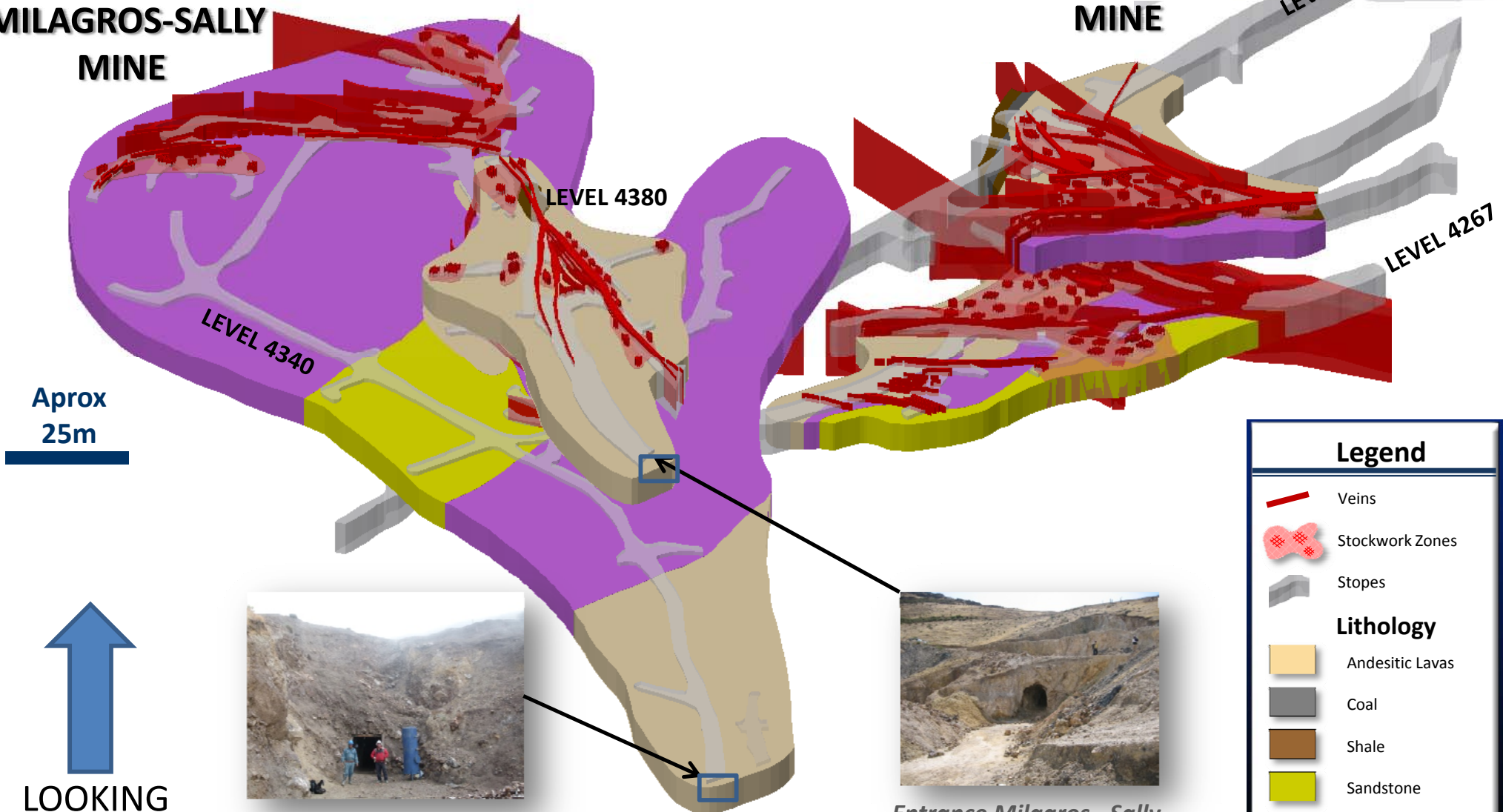
# Location of Underground Workings



# Underground Geology - Santa Rosa & Milagros-Sally Mines

MILAGROS-SALLY  
MINE

SANTA ROSA  
MINE



Aprox  
25m









LEVEL 4380

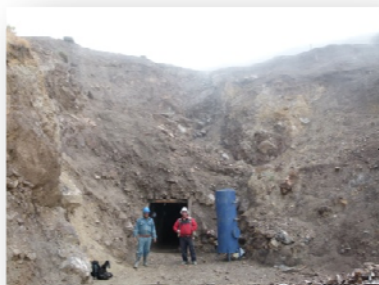
LEVEL 4340

LEVEL 4280

LEVEL 4267

## Legend

-  Veins
-  Stockwork Zones
-  Stopes
- Lithology**
-  Andesitic Lavas
-  Coal
-  Shale
-  Sandstone
-  Quartzite



Entrance Milagros -Sally  
Lower Level 4340



Entrance Milagros -Sally  
Upper Level 4380

LOOKING  
NORTH WEST

# Underground Channel Sampling – Zinc

## MILAGROS-SALLY

15.1m @ 43 g/t Ag, 2.6% Pb, 7.8% Zn

27.6m @ 43 g/t Ag, 1.8% Pb, 3.6% Zn

14m @ 40 g/t Ag, 0.8% Pb, 8.3% Zn

9m @ 72 g/t Ag, 2.2% Pb, 5.8% Zn

3.6m @ 11 g/t Ag, 0.5% Pb, 6.6% Zn

11.3m @ 76 g/t Ag, 3.2% Pb, 14.6% Zn

53.6m @ 32 g/t Ag, 1.0% Pb, 4.0% Zn

5.9m @ 389 g/t Ag, 24.3% Pb, 15.5% Zn

Number of Channel Samples = 437  
Average Sample Width 1.3m (from 0.25 – 3.5m)  
Arithmetic Grade 5.7 % Zn  
Weighted Average Grade = 4.6 % Zn

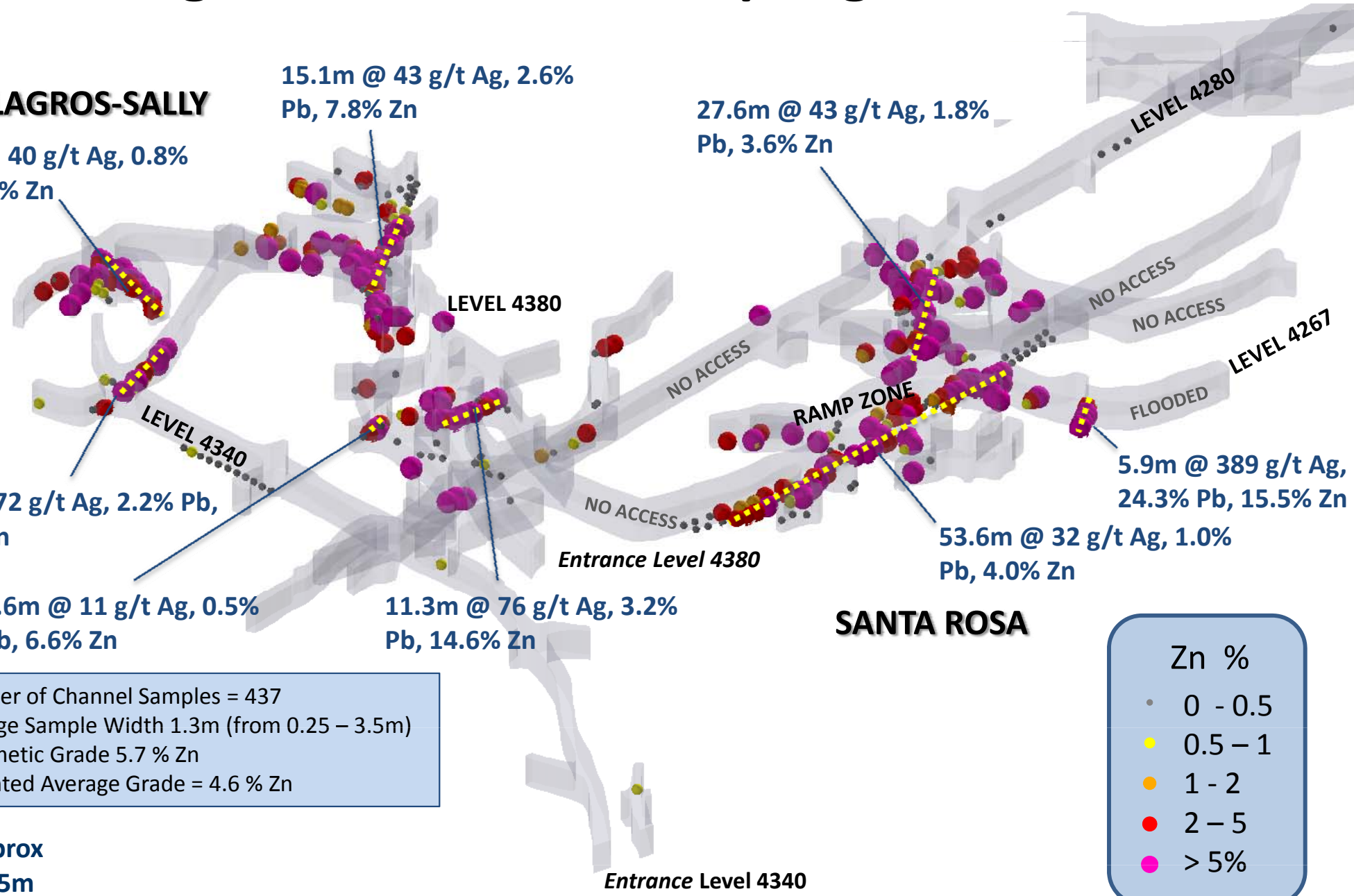
Aprox  
25m

Entrance Level 4340

## SANTA ROSA

Zn %

- 0 - 0.5
- 0.5 - 1
- 1 - 2
- 2 - 5
- > 5%



# Underground Channel Sampling – Silver

## MILAGROS-SALLY

15.1m @ 43 g/t Ag, 2.6% Pb, 7.8% Zn

27.6m @ 43 g/t Ag, 1.8% Pb, 3.6% Zn

14m @ 40 g/t Ag, 0.8% Pb, 8.3% Zn

9m @ 72 g/t Ag, 2.2% Pb, 5.8% Zn

3.6m @ 11 g/t Ag, 0.5% Pb, 6.6% Zn

11.3m @ 76 g/t Ag, 3.2% Pb, 14.6% Zn

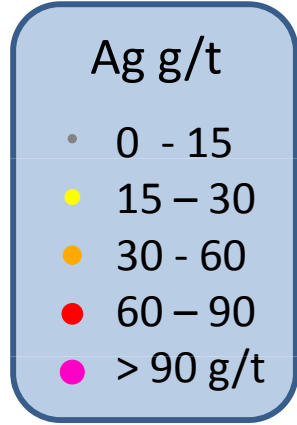
53.6m @ 32 g/t Ag, 1.0% Pb, 4.0% Zn

5.9m @ 389 g/t Ag, 24.3% Pb, 15.5% Zn

Number of Channel Samples = 437  
Average Sample Width 1.3m (from 0.25 – 3.5m)  
Arithmetic Grade 62 g/t Ag  
Weighted Average Grade = 44 g/t Ag

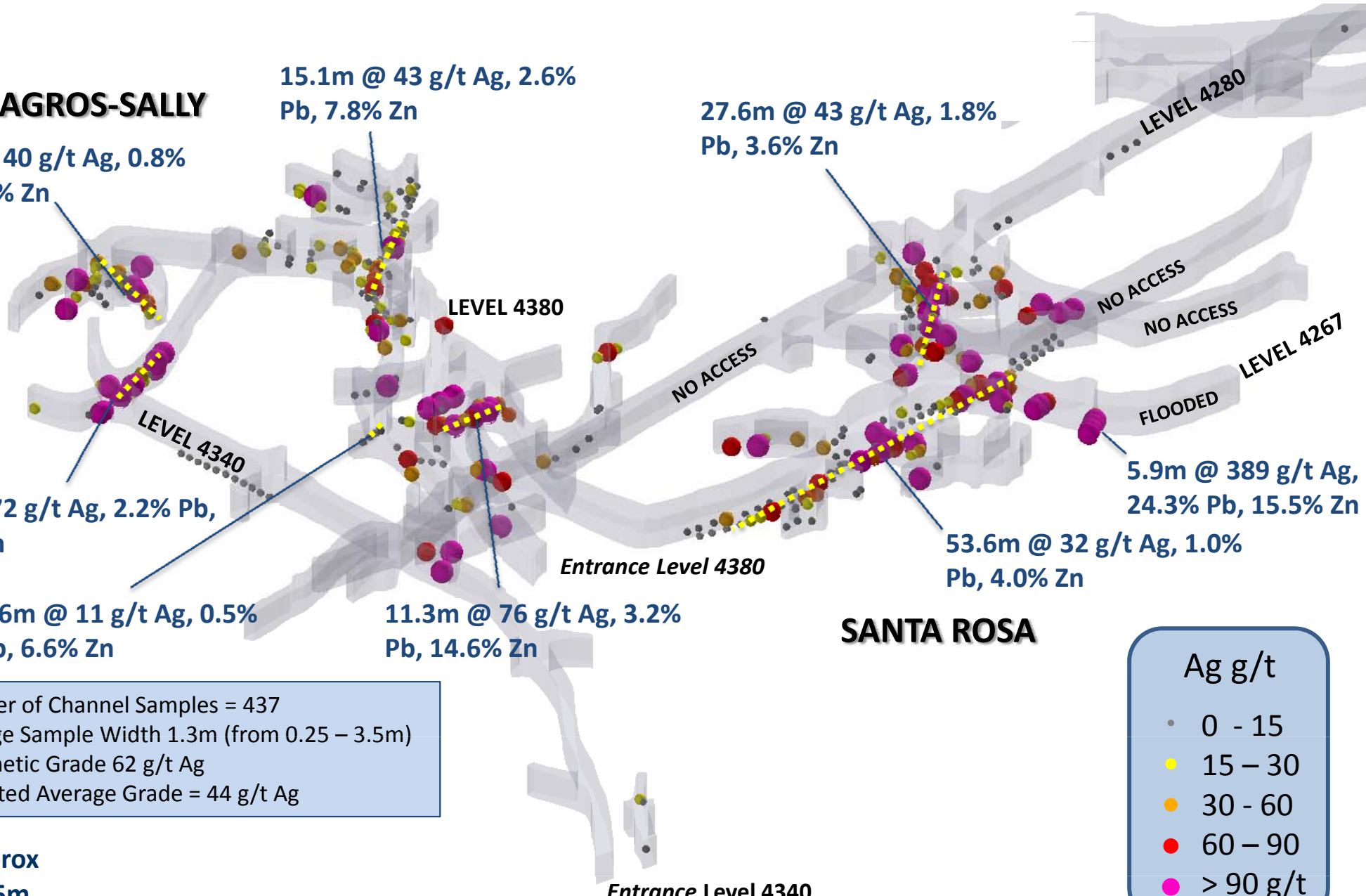
Aprox  
25m

## SANTA ROSA



Entrance Level 4340

Entrance Level 4380



# Underground Channel Sampling – Lead

## MILAGROS-SALLY

15.1m @ 43 g/t Ag, 2.6% Pb, 7.8% Zn

27.6m @ 43 g/t Ag, 1.8% Pb, 3.6% Zn

14m @ 40 g/t Ag, 0.8% Pb, 8.3% Zn

9m @ 72 g/t Ag, 2.2% Pb, 5.8% Zn

3.6m @ 11 g/t Ag, 0.5% Pb, 6.6% Zn

11.3m @ 76 g/t Ag, 3.2% Pb, 14.6% Zn

## SANTA ROSA

53.6m @ 32 g/t Ag, 1.0% Pb, 4.0% Zn

5.9m @ 389 g/t Ag, 24.3% Pb, 15.5% Zn

Number of Channel Samples = 437  
Average Sample Width 1.3m (from 0.25 – 3.5m)  
Arithmetic Grade 2.2 % Pb  
Weighted Average Grade = 1.6 % Pb

Aprox  
25m

Entrance Level 4340

